

One & Only

HAYMAN ISLAND

Great Barrier Reef



Accommodation



Experience a private island like no other. Immersed in the Great Barrier Reef's breathtaking natural environment, enjoy exquisite indulgences and warm personalised service. Discover endless opportunities to delight the senses.

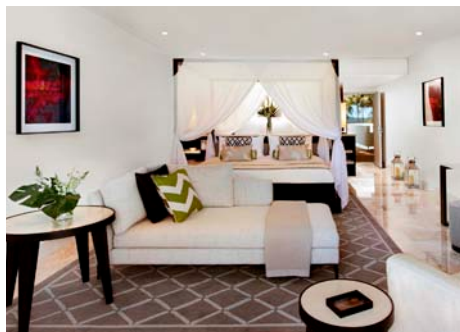
The resort hugs a pristine white sandy beach of over 2km in length. Accommodation is located in 3 distinct areas of the resort, each different in style and ambiance.



Hayman Wing

Stylish elegance immersed in the sensory beauty of nature. Located on the tranquil eastern side of the resort, all Hayman Rooms and Suites in this wing have been newly refurbished with a unique substance and style. Generously spacious and set within a lush landscape overlooking a tranquil lily lagoon and moments from Hayman Beach and the Coral Sea.

All rates are per room per night based on single or double/twin occupancy and include daily buffet breakfast, use of non-motorised watersports and selected resort activities including tennis, squash, croquet and golf putting and chipping.



HAYMAN LAGOON ROOM

Located on Levels 1, 2 and 3, Hayman Lagoon Rooms are newly refurbished and offer tranquil lily lagoon or garden views. All rooms feature spacious ensuite bathroom with separate shower, bath and double vanity, open-plan dressing room and a private balcony. 54m² (581ft²). Adjoining rooms are subject to availability upon request.

Nightly Rate A\$730

Special Opening Offer A\$548 (25% off Nightly Rate)

Festive Nightly Rate (20 December 2014 - 4 January 2015) A\$875



HAYMAN OCEAN VIEW ROOM

Located on Levels 1, 2 and 3, Hayman Ocean View Rooms are newly refurbished and offer partial views of Hayman Beach and the Coral Sea. All rooms feature spacious ensuite bathroom with separate shower, bath and double vanity, open-plan dressing room and a private balcony. 54m² (581ft²). Adjoining rooms are subject to availability upon request.

Nightly Rate A\$790

Special Opening Offer A\$593 (25% off Nightly Rate)

Festive Nightly Rate (20 December 2014 - 4 January 2015) A\$950



HAYMAN PREMIUM OCEAN VIEW ROOM

Located on Levels 1, 2 and 3, Hayman Premium Ocean View Rooms are newly refurbished and offer stunning uninterrupted views of Hayman Beach and the Coral Sea. All rooms feature spacious ensuite bathroom with separate shower, bath and double vanity, open-plan dressing room and a private balcony. 54m² (581ft²). Adjoining rooms are subject to availability upon request.

Nightly Rate A\$850

Special Opening Offer A\$638 (25% off Nightly Rate)

Festive Season Nightly Rate (20 December 2014 - 4 January 2015) A\$1020

All imagery and information is indicative only and subject to change.

Special Opening Offer valid for sale to 31 July 2014 and valid for travel 1 July - 30 September 2014

For further information or to make a reservation please contact One&Only Hayman Island Reservations

E reservations@hayman.com.au T +61 7 4940 1838 Toll Free (in Australia) 1800 075 175

oneandonlyhaymanisland.com.au

One&Only
HAYMAN ISLAND
Great Barrier Reef

Hayman Wing

Stylish elegance immersed in the sensory beauty of nature. Located on the tranquil eastern side of the resort, all Hayman Rooms and Suites in this wing have been newly refurbished with a unique substance and style. Generously spacious and set within a lush landscape overlooking a tranquil lily lagoon and moments from Hayman Beach and the Coral Sea.

All rates are per room per night based on single or double/twin occupancy and include daily buffet breakfast, use of non-motorised watersports and selected resort activities including tennis, squash, croquet and golf putting and chipping.



HAYMAN SUITE

Located on Levels 1, 2 and 3, Hayman Suites are newly refurbished with breathtaking views of the tranquil lily lagoon and gardens or Hayman Beach and the Coral Sea. All suites feature separate bedroom, dressing and lounge areas, ensuite bathroom with separate shower, bath and double vanity and a private double balcony. 90m² (969ft²)

Nightly Rate A\$1350

Special Opening Offer A\$1013 (25% off Nightly Rate)

Festive Nightly Rate (20 December 2014 - 4 January 2015) A\$1620



HAYMAN FAMILY ROOM

Located on Levels 1, 2 and 3, Hayman Family Rooms are newly refurbished and offer two rooms, connected privately through a shared foyer, each with beautiful views of the tranquil lily lagoon and gardens or Hayman Beach and the Coral Sea. Each room features a spacious ensuite bathroom with separate shower, bath and double vanity, open-plan dressing room and a private balcony. 54m² (581ft²)

Nightly Rate A\$1280

Special Opening Offer A\$960 (25% off Nightly Rate)

Festive Nightly Rate (20 December 2014 - 4 January 2015) A\$1540



HAYMAN FAMILY SUITE

Located on Levels 1, 2 and 3, Hayman Family Suites are newly refurbished and offer two rooms, connected privately through a shared foyer, each with beautiful views of the tranquil lily lagoon and gardens or Hayman Beach and the Coral Sea. A Hayman Suite and separate twin bedroom each feature spacious ensuite bathroom with separate shower, bath and double vanity, open-plan dressing room and a private balcony. Suite 90m² (969ft²) and room 54m² (581ft²).

Nightly Rate A\$1715

Special Opening Offer A\$1286 (25% off Nightly Rate)

Festive Season Nightly Rate (20 December 2014 - 4 January 2015) A\$2060

All imagery and information is indicative only and subject to change.

Special Opening Offer valid for sale to 31 July 2014 and valid for travel 1 July - 30 September 2014

For further information or to make a reservation please contact One&Only Hayman Island Reservations

E reservations@hayman.com.au T +61 7 4940 1838 Toll Free (in Australia) 1800 075 175

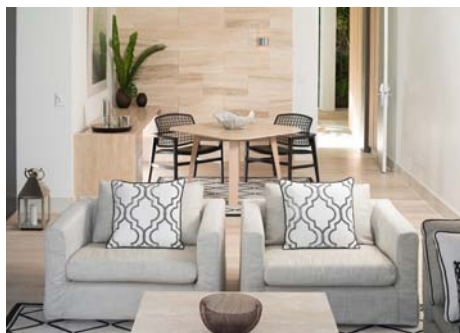
oneandonlyhaymanisland.com.au

One&Only
HAYMAN ISLAND
Great Barrier Reef

Pool Wing

The ultimate resort experience featuring magnificent new Pool Suites perched over the iconic Hayman Pool with either direct suite swim-out access into the pool or breathtaking Coral Sea views. All suites are only moments from Hayman Beach and the Coral Sea.

All rates are per room per night based on single or double/twin occupancy and include daily buffet breakfast, use of non-motorised watersports and selected resort activities including tennis, squash, croquet and golf putting and chipping.



ONE-BEDROOM POOL SUITE

One-Bedroom Pool Suites, located on Levels 2 and 3, are completely new and offer stunning views over the Hayman Pool and Coral Sea. All suites feature separate bedroom, dressing room and lounge areas, ensuite bathroom with separate shower, bath and double vanity and a private double balcony. 75m² (807ft²)

Nightly Rate A\$980

Special Opening Offer A\$735 (25% off Nightly Rate)

Festive Nightly Rate (20 December 2014 - 4 January 2015) A\$1175



ONE-BEDROOM DIRECT POOL ACCESS SUITE

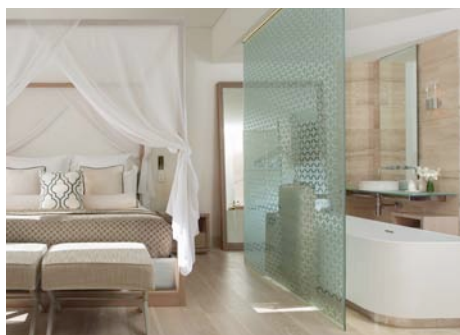
One-Bedroom Direct Pool Access Suites, located on Level 1, are completely new and offer direct swim-out access into the Hayman Pool from the balcony. All suites feature separate bedroom, dressing and lounge areas, ensuite bathroom with separate shower, bath and double vanity and a private double balcony. 75m² (807ft²)

Note: not suitable for children under the age of 12 years.

Nightly Rate A\$1350

Special Opening Offer A\$1013 (25% off Nightly Rate)

Festive Nightly Rate (20 December 2014 - 4 January 2015) A\$1620



TWO-BEDROOM POOL SUITE

Two-Bedroom Pool Suites, located on Levels 2 and 3, are completely new and offer stunning views over the Hayman Pool and Coral Sea. Room configuration features a Pool Suite with a separate interconnecting twin bedroom each with spacious ensuite bathroom with separate shower, bath and double vanity, open-plan dressing room, dining area and a private double balcony. Suites 75m² (807ft²). Interconnecting twin room 38m² (409ft²).

Nightly Rate A\$1480

Special Opening Offer A\$1110 (25% off Nightly Rate)

Festive Season Nightly Rate (20 December 2014 - 4 January 2015) A\$1775

All imagery and information is indicative only and subject to change.

Special Opening Offer valid for sale to 31 July 2014 and valid for travel 1 July - 30 September 2014

For further information or to make a reservation please contact One&Only Hayman Island Reservations

E reservations@hayman.com.au T +61 7 4940 1838 Toll Free (in Australia) 1800 075 175

oneandonlyhaymanisland.com.au

One&Only
HAYMAN ISLAND
Great Barrier Reef

Beach Wing

Hayman Beach offers a completely unique hideaway and is the ultimate beachside reef experience. This accommodation collection features Kerry Hill designed Beach Villas, tranquil Retreat Rooms and a private Beach House creating the perfect setting for the quintessential luxury Australian beach holiday.

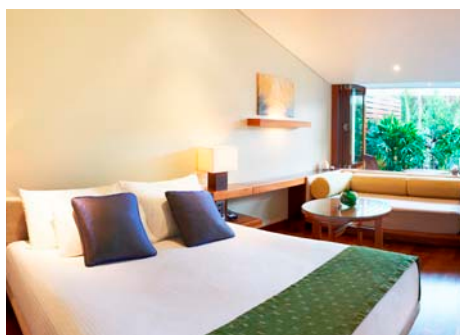
All rates are per room per night based on single or double/twin occupancy and include daily buffet breakfast, use of non-motorised watersports and selected resort activities including tennis, squash, croquet and golf putting and chipping.



BEACH VILLA WITH POOL

Located on the absolute beachfront, these 8 villas represent the ultimate in beachside luxury. Each villa features superb views of the Coral Sea, an open-air private pool, private terrace, stunning bathroom with island bath and separate indoor and outdoor showers. Also includes complimentary in-room bar, internet access and Beach Butler service. 120m² (1292ft²)

Nightly Rate A\$1990
Special Opening Offer A\$1493 (25% off Nightly Rate)
Festive Season Nightly Rate (20 December 2014 - 4 January 2015) A\$2390



BEACH VILLA WITH POOL AND SEPARATE RETREAT ROOM

Retreat Rooms are partnered in conjunction with Beach Villas to create the perfect family holiday beachfront accommodation. Retreat Rooms are located directly behind the Beach Villas and set in lush tropical gardens. Features include twin or double bed accommodation and an open-plan bathroom with sunken bath that overlooks a private rockery garden with outdoor rainwater shower. 38m² (409ft²)

Nightly Rate A\$2720 (1 Beach Villa and 1 Retreat Room)
Special Opening Offer A\$2040 (25% off Nightly Rate)
Festive Season Nightly Rate (20 December 2014 - 4 January 2015) A\$3265



BEACH HOUSE WITH POOL

Located directly on Hayman Beach, this magnificent Beach House offers superb beachfront living. Features include Beach Butler service, an enclosed garden and an outdoor deck and plunge pool. The interior features a 42" plasma screen TV and Bose SoundDock portable digital music system. A magnificent open plan bathroom has a double vanity, frameless glass shower, centrepiece bath and a lush outdoor rockery shower. 90m² (969ft²)

Nightly Rate A\$3700
Special Opening Offer A\$2775 (25% off Nightly Rate)
Festive Season Nightly Rate (20 December 2014 - 4 January 2015) A\$4440

Special Opening Offer valid for sale to 31 July 2014 and valid for travel 1 July - 30 September 2014

For further information or to make a reservation please contact One&Only Hayman Island Reservations
E reservations@hayman.com.au T +61 7 4940 1838 Toll Free (in Australia) 1800 075 175

oneandonlyhaymanisland.com.au

One&Only
HAYMAN ISLAND
Great Barrier Reef

Hayman Penthouses

Located on the top floor of the Hayman Wing on the tranquil eastern side of the resort, these uniquely designed and furnished penthouses offer breathtaking luxury. All penthouses feature sweeping views of the Hayman Beach, the Coral Sea and the Whitsundays.

Penthouse rates include daily buffet breakfast, use of non-motorised watersports and selected resort activities including tennis, squash, croquet and golf putting and chipping.



TWO-BEDROOM DIANE VON FURSTENBERG PENTHOUSE

World-acclaimed fashion designer, Diane von Furstenberg, designed this penthouse appointed with unique furnishings upholstered in her striking signature fabrics. Features spacious lounge and dining area, 2 bedrooms and 2 bathrooms each with separate shower, bath, double vanity and a large balcony. Includes complimentary in-room bar, internet access and Butler service. 160m² (1722ft²)

Nightly Rate A\$6150

Festive Season Nightly Rate (20 December 2014 - 4 January 2015) A\$7380



THREE-BEDROOM OWNER'S PENTHOUSE

This is Hayman's premier penthouse accommodating up to 6 guests. Features a presidential-size sitting room and dining area, 3 bedrooms and 3 bathrooms, kitchenette, bar and wrap around balcony. The 3-Bedroom Owner's Penthouse includes complimentary in-room bar, internet access and a dedicated 24-hour Butler. 195m² (2099ft²)

Nightly Rate A\$10600

Festive Season Nightly Rate (20 December 2014 - 4 January 2015) A\$12720



ONE-BEDROOM AND TWO-BEDROOM PENTHOUSES

These luxurious 1 or 2-Bedroom Penthouses are extremely spacious and boast stunning uninterrupted views of Hayman Beach and the Coral Sea. The penthouses feature separate bedroom, dressing and lounge areas, ensuite bathroom with separate shower, bath and double vanity and a large balcony. 1-Bedroom Penthouse 75m²-92m² (807ft²-990ft²) and 2-Bedroom Penthouse 119m² (1281ft²).

Nightly Rate 1-Bedroom A\$1920

Festive Season Nightly Rate 1-Bedroom (20 December 2014 - 4 January 2015) A\$2300

Nightly Rate 2-Bedroom A\$3160

Festive Season Nightly Rate 2-Bedroom (20 December 2014 - 4 January 2015) A\$3790

Special Opening Offer valid for sale to 31 July 2014 and valid for travel 1 July - 30 September 2014

For further information or to make a reservation please contact One&Only Hayman Island Reservations

E reservations@hayman.com.au T +61 7 4940 1838 Toll Free (in Australia) 1800 075 175

oneandonlyhaymanisland.com.au

One&Only
HAYMAN ISLAND
Great Barrier Reef